

millboard

Live. Life. **Outside.**



Envello Cladding Installation guide

EN - UK

Shadow Line⁺ - Vertical



Contents page

Easily find your way around the Millboard Envello
Cladding installation guide for Shadow Line⁺ - Vertical

About Millboard	4-5
Product Suitability	6
Intended uses & limitations	6
Pre-installation	7-9
Storage & handling	7
Tools & PPE required	8
Cutting	9
Fire performance	9
Materials	10-15
Colour characteristics	10
Material Calculator	11
Cladding boards & accessories	12-15
Preparation	16-19
Ventilation	17
Cladding support	18-19
Installation	20-23
Corners of buildings	20-21
Joining corner profiles	21
Details around windows & doors	22-23
Starter trims	24
Fixings	24
Joining boards	25
Installation abutting render	26
Aftercare	27



About Millboard cladding

A closer look

Millboard cladding uses a unique material, unrivalled across the globe. Take a closer look at the construction and performance of this stunning yet functional cladding.

Tough

The unique surface layer is more resistant to scratches and is designed to better withstand demanding outdoor environments.

Enduring

The dual-tone surface layer is hand coloured using pigments designed to improve resistance to sun damage and fading.

Beautiful

Each length is hand moulded using specially selected timber masters for an unrivalled organic wood-grain appearance in a composite material.

Fire rated

Shadow Line⁺ is fire rated to Euroclass D (BS EN 13501-1) for added assurance and quality.

Fire rating **does not** apply to Shadow Line or Board & Batten.

Wood free

Millboard cladding is wood-free and non-porous which, in comparison to timber, means there's no leaching or releasing of tannins to other surfaces.

Stronger

The structural core is a blend of natural minerals bonded in a polymer resin with renewable biopolymers and fibre reinforcement for added strength and durability.

Lightweight

Our unique closed 'cellular' internal structure reduces weight while maintaining strength and increasing thermal performance.

Durable

Millboard will not split, rot or harbour insects like timber does



An enhanced offering over the standard Shadow Line, to provide a complete a fire rated cladding system.

Shadow Line⁺ has been developed to look identical to our standard Shadow Line boards shown throughout this guide, but with the additional benefit of a fire classification. Tested to the rigorous demands of BS EN 13501-1, the Shadow Line⁺ system achieves a classification of Euroclass D.

The fire rating also includes the accessory items through a full system build-up, including the reveal boards, corner Profiles and fixings. The formulation of the Shadow Line⁺ still continues the unique overall Millboard composition of a resin mineral mix, however has now been specially formulated to achieve the fire rating.



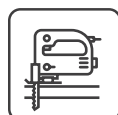
Hand moulded and coloured
Skilfully moulded by hand and authentically coloured, replicating timber in the most realistic way.



Impact and weather resistant
A durable coating and elastomeric surface ensures increased resilience against hail and natural weathering.



Moisture resistant
Due to Envello's non-porous composition, no sealing is required, unlike other available products.



Easy to install
No specialist tools required, Envello can be cut and installed in the same way as traditional timber.



UV stability
UV stabilised for better performance and fade resistance over time.



Wood free
Envello is solid, not hollow, making it strong. This means it will not rot or warp like timber.



Increased thermal performance
The unique composition helps to enhance the thermal performance of buildings in both winter and summer.



Fire rated system (Shadow Line⁺ only)
Certified to a Euroclass D rating (BS EN 13501-1) by a UKAS accredited laboratory, when fitted in accordance with our installation guide.

Crafted to be perfectly imperfect

Each length of Millboard cladding is the result of a long process of craftsmanship and attention to visual detail. Just like the specially selected Oak timbers used to create the unique moulds, the fine details and natural imperfections in the original timber has been recreated in the highly durable Millboard product.

From the initial laying of the elastomeric surface, right through to the pouring of the fibre-reinforced resin mineral, we focus on achieving the quality of finish, reflecting the true random and natural characteristics of the original timber. Our passion is to accurately reproduce the original whilst adding to the benefits of our unique board technology, this is why many of our processes are carried out manually. For example, each piece is hand coloured to establish the authentic wood finish our boards are renowned for.

Product Suitability

Intended Use

Envello Cladding has been designed for beauty, longevity and ease of installation on residential and low-rise buildings. However, to ensure the best installation and long-term performance, we recommend that a professional tradesperson carries out the installation.

Millboard recommend that all cladding designs are approved by a licensed architect or engineer prior to installation. It is the property owner's responsibility to make sure that your plans meet any relevant local building regulations before the installation begins. Envello Cladding must be supported by a suitable substructure that is in accordance with building regulations.

Envello Cladding is a rainscreen cladding system which can be described as 'A wall comprising an outer skin of cladding boards and an airtight insulated backing wall separated by a ventilated cavity. Some water may penetrate into the cavity but the rainscreen cladding is intended to provide protection from direct rain'. Therefore, a well ventilated, free draining cavity should always be included in the detailed design.

It is not recommended to use Envello Cladding in structural applications, as it would need to be fixed to a structural frame of battens.

Limitations

This installation guide is not exhaustive as the responsibility for design lies with the specifier or responsible party for the project, to ensure the final design meets the requirements of the intended application and Building regulations.

For designs outside the scope of this installation guide, specific design must be undertaken by an architect or designer.

If in doubt, we would strongly recommend contacting Millboard pre-design stage to arrive at a suitable, robust, efficient solution and to avoid disappointment.

It is the responsibility of designers, installers, and owners to ensure that the information in this manual is current, by checking with Millboard or referring to our website. As new technology is introduced or industry standards are altered, Millboard reserves the right to alter existing specifications and remove products without notice. Visit our website on: www.millboard.co.uk

The use of this manual: does not guarantee acceptance or accreditation of a design, material or building solution by any entity authorised to do so under law; does not mean that a design, material or building solution complies with the building regulation; or does not absolve the user from complying with any local, or Government legal requirements.

Pre-Installation

Storage and Handling

Millboard Envello Cladding boards should always be stored on a flat surface or level bearers a maximum of 400mm apart and stacked face-to-face, not back-to-face. Both external and internal corner profiles should be fully supported along their length.

When loading and unloading by hand, make sure that both ends are lifted on the edge to avoid permanent deformation and/or damage to the boards.

They should only be lifted off the stack, and not dragged as this could cause abrasion or marking on the surface.

Wear gloves and long sleeves when handling the boards and take care when lifting them. We recommend that two people carry the boards, they should be carried on their side for increased rigidity.

We advise that the cladding planks are stored on site at least 72 hours before installation, to allow the boards to climatize. Only move the pallet if the boards are safely strapped to it.

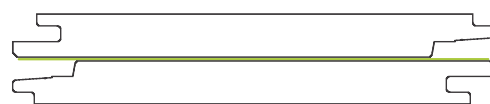
Millboard cannot be held responsible for damage caused by improper storage and handling of the product.

Tolerances:

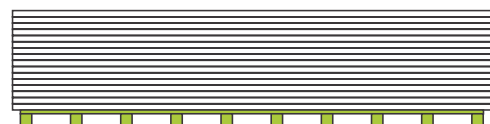
There will always be a slight variance in the board's dimensions due to the fact that we mould from natural oak, and due to the pressure of the moulding process. Despite this, we calibrate the boards to maintain as consistent a profile as possible.

The manufacturing tolerances are: Width: ± 2 mm. Length: ± 5 mm. Thickness: ± 2 mm.

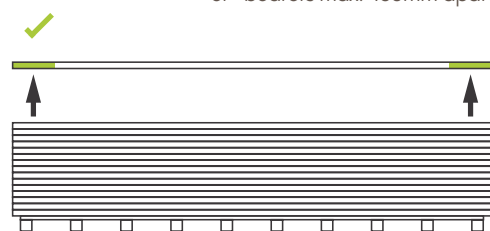
When working with the boards, a level may be required to help keep the boards running upright. In order to achieve straight and consistent 5-6mm gapping between boards, it may be necessary to use our Millboard Multi-Spacers during the installation process.



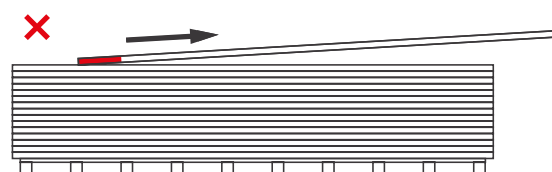
Stack boards face-to-face



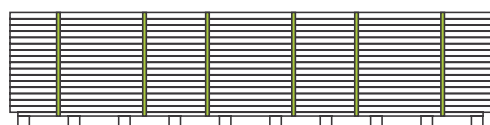
Ensure boards are on a flat surface or bearers max. 400mm apart



Lift boards on the edges using 2 people to lift at a time



Do not drag the boards off the stack



Ensure boards are secured to the pallet before transporting

Tools & PPE required

The tools and PPE you will need to install the Millboard Envello Cladding product.

If you are unsure on how to use any tools, please consult the tool's manufacturer's user manual.



Mitre saw/jigsaw/handsaw
Millboard Envello Cladding products can be cut with standard wood cutting tools (i.e. mitre saw, jigsaw, handsaw). We recommend using a carbon-tipped saw blade. An aluminium cutting blade should be used for the metal trims.



Personal Protective Equipment
When handling Millboard products, it is advised to wear long sleeves and gloves. When cutting products it is advised to wear a FFP3 dustmask, ear defenders and safety glasses.



Tool set
Standard carpentry tools will be needed to complete the installation, including: tape measure, a pencil, set square, planer, stanley knife, surform and a drill bit set.



Power drill and 2nd fix nailer
Standard power drill drivers are used to fix the cladding products. 2nd fix nailer can be used with Stainless Steel brads when the board tongue is taken off.



Spirit level
A spirit level is used to ensure that the battens are upright and the starter trims are level.



Laser level/line
If available, a laser level can be used to ensure the starter trims are installed level.

Cutting

Envello products can be cut with standard wood cutting tools (i.e. mitre saw, jigsaw, handsaw), we recommend a carbon-tipped saw blade. An aluminium cutting blade should be used for the metal trims.

When cutting the boards, wear an FFP3 dust mask, safety glasses, long sleeves and protective gloves.

A dust bag or vacuum must be used on mitre saws.

Make sure that the boards are adequately supported when cutting. Boards can be cut face-up or face-down.

When the board is cut, Touch-up Coating should be used if the cut will be visible and exposed to UV.

Dispose of board off-cuts by disposing as general waste or sending to a municipal incinerator for energy replenishment, don't burn them at home.

Tip:

If there is a breeze/wind when cutting the boards, locate the saw up wind so that excess dust is blown away from the operator & project.

Fire Performance

Millboard Envello Shadow Line+ cladding boards are crafted with fire retardants in the board composition, they have been tested to BS EN 13501-1 and have a classification of D-s3, d0.

In general, Shadow Line+ cladding can be used on low-rise residential and some commercial properties that are below 11m in height and are more than 1m from the boundary.

The responsibility for the cladding's suitability in the required location is to be determined by a certified building professional (building control, building insurance, fire officer, etc).

Millboard will not be held responsible for incorrect specification, application, or product installation in areas not in accordance with government guidance, in the UK or abroad.

Current guidance should be gained from the government website relating to the geographical project location, England's building regulation Approved Document B can be found on - <https://www.gov.uk/government/publications/fire-safety-approved-document-b>



Materials

Colour Characteristics

We go to extraordinary lengths to recreate the look of natural products and therefore intentionally add secondary toning colours. This painstaking process means that there may be variance within the same board or between boards.

Millboard Envello Cladding has been designed to replicate the natural variances of timber and is manufactured to have tonal variance in the colour.

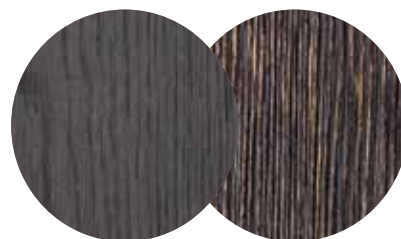
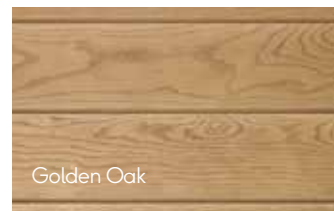
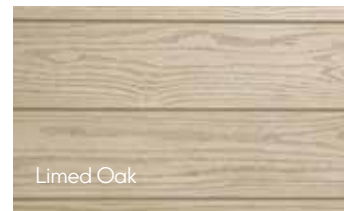
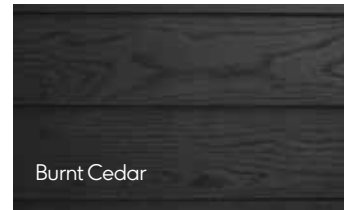
Buying all the Millboard you need at the same time should help to ensure that the colour is consistent. If you do have multiple batches then it is best to mix the boards, to create an effective, subtle blend.

Antique Oak boasts more tonal variation per individual board than any of the other colours in the Millboard range.

As with all products exposed to the Sunlight (UV), Millboard will naturally weather and tone down over time. Loss of gloss is perfectly normal and will not affect the performance of the products.

Millboard takes great care ensuring the performance of its products maintain the timber effect we seek to portray, and we believe at every stage of its life Millboard truly reflects this more than any other timber alternative product, due to being moulded from real timber and the hand coloured process.

On delivery if you identify any aesthetic or structural defects please contact us prior to installation.



↑ Colour tone may vary from batch to batch.
Antique Oak has more variance between boards.

Material Calculator

The area (m²) is the total wall area to be clad.

m² = width x height

(minus the area of any windows & doors)

Number of boards = m² x 1.53



Vertical Installation

Vertical starter Trims = length of cladding area / 2.5



Perforated Closures will be needed at the top & bottom of the cladding and any windows, and the top of any doors.



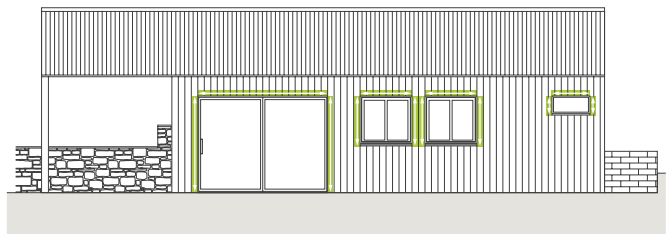
Number of perforated closures = [(width of cladding area x 2) + (width of all windows x 2) + (width of all doors)] / 3

Corners, windows & doors

External/Internal Corner Profiles = total linear m for corners / 3

Reveal boards = total linear m around windows and doors / 3.6

Extra perforated closures = Number of corner profiles



Fixings

Number of boxes

30mm fixings = number of cladding boards x 10 / 250

20mm fixings = number of perforated closures + corner profiles x 14 / 250

Envello Coloured Head Screws = (number of Reveal boards x 26) + number of cladding boards / 100

Touch-up coating = Number of Reveal boards / 50

Tip:

Allow extra material for wastage and offcuts. We would recommend adding at least 10% to the quantities, complex designs may require more material.

Materials

Cladding boards & accessories



Envello Shadow Line+ Cladding boards



Dimensions:	200 x 18 x 3600mm
Actual 'installed width':	181mm
Boards per m ² :	1.53*
Colours:	Smoked Oak - MCL360D Antique Oak - MCL360A Golden Oak - MCL360G Burnt Cedar - MCL360R Limed Oak - MCL360L Salt Blue - MCL360T Sage Green - MCL360N
Fixings:	30mm fixings. Coloured Head screws

*When installed

Millboard Reveal Boards

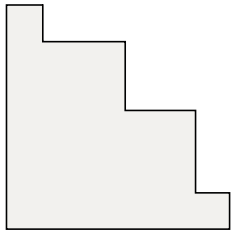


Dimensions:	146 x 16 x 3600mm
Colour:	Smoked Oak - MCR146D Antique Oak - MCR146A Golden Oak - MCR146G Burnt Cedar - MCR146R Limed Oak - MCR146L Salt Blue - MCR146T Sage Green - MCR146N
Fixings:	Coloured Head screws. Brad nails

Reveal boards may be required for window/door reveals or soffits.

Cladding boards & accessories

Shadow Line+ External Corner Profile

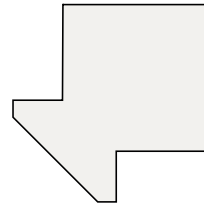


Dimensions: 50 x 50 x 3050mm
 Colours: Smoked Oak - MCFE50D
 Antique Oak - MCFE50A
 Golden Oak - MCFE50G
 Burnt Cedar - MCFE50R
 Limed Oak - MCFE50L
 Salt Blue - MCFE50T
 Sage Green- MCFE50N

Fixings: Perforated closure, 20mm fixings

Profile used to finish off the external corner of the building.

Shadow Line+ Internal Corner Profile



Dimensions: 38 x 38 x 3050mm
 Colours: Smoked Oak - MCFH38D
 Antique Oak - MCFH38A
 Golden Oak - MCFH38G
 Burnt Cedar - MCFH38R
 Limed Oak - MCFH38L
 Salt Blue - MCFH38T
 Sage Green - MCFH38N

Fixings: Perforated closure, 20mm fixings

Profile used to finish off the internal corner of the building.

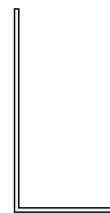
Perforated Closure

Vertical Starter Trim L



Dimensions: 25 x 13 x 2500mm
 Product code: GT250L
 Fixings: 20mm fixings

Aluminium trim used to start the cladding at the bottom.



Dimensions: 50 x 25 x 3000mm
 Product code: GP300L
 Fixings: 20mm fixings

Aluminium closure used to prevent insects/rodents getting into the ventilated cavity behind the boards, but allowing airflow. Fixed at the bottom of the cladding with the starter trim, also at the top on its own, as well as with the corner profiles.

Materials

Cladding Accessories Fixings



Dimensions: 3.5 x 20mm

Quantity: Box of 250

Product code: FC20P250

A2 Stainless Steel fixings used to fix the corner profiles, starter trims and perforated closures

Envello Coloured Head Screws



Dimensions: 3.5 x 40mm

Quantity: Box of 100

Product code: Smoked Oak - FC40P100D

Antique Oak - FC40P100A

Golden Oak - FC40P100G

Burnt Cedar - FC40P100R

Limed Oak - FC40P100L

Salt Blue- FC40P100T

Sage Green - FC40P100N

In most instances the cladding boards are fixed using the 30mm fixings through the tongue. Envello Coloured Head Screws may be required for fixing the cladding boards where a fixing through the tongue is not possible, also used for fixings Reveal boards.

Cladding Board Fixings



Dimensions: 3.5 x 30mm

Quantity: Box of 250

Product code: FC30P250

A2 Stainless Steel fixings used to fix the Envello cladding boards on to the battens, fixing through the tongue of the boards



Alternative to the Coloured Head Screws:

As an alternative to the Coloured Head screws, 16g stainless steel brads can be used through the face of the board. The brads need to be a minimum of 38mm long, the overall length will depend on the depth of the battens used.

This guide will detail how these can be used in conjunction with the cladding. A small hole may be left where the brad nail has gone through the board surface.

Touch-up Coating



Touch-up used for coating any exposed cuts or edges on the Millboard Envello Cladding boards, corner profiles or Reveal boards.

Additional items that may be required (supplied by others):

- Flashing/drip profiles (around windows/doors/openings or at the bottom of the cladding)
- Fixings for installing the battens on to the structure (suitable type of fixing for the structure and battens used)
- Screws for fixing the battens together (suitable type of screw for the location and battens used)
- Clear high performance sealant adhesive (eg. CTI, Soudall Fix All)
- Polyurethane wood glue (used when mitring the boards)
- Super glue (used when mitring the boards)
- Suitable treated timber battens
- 16g Stainless Steel Brad nails (as an alternative to the coloured head screws)





Preparation

Ventilation

Ventilation for the control of moisture is a key element in the design and construction of cladding. It is a requirement not an option and should not be overlooked. A continuous airflow from bottom to top is vital for long term durability.

As a rainscreen system it assumes that the cladding will always be subject to some moisture penetration, therefore the surface that the battens will be fixed to needs to provide the waterproof finish.

Although a breather membrane is necessary for a timber frame, it may not be required on a masonry cavity wall.

Where the substrate is an existing building with solid walls (i.e. no cavity), to prevent water penetration the wall should be given a waterproof coating or a breathable membrane should be fitted.

Whatever system is used a minimum 19mm open cavity should always be provided behind the cladding and a minimum 10mm continuous gap left at the top and bottom of the system for full ventilation to dissipate any condensation or drainage at the bottom. (see fig.1)

Consideration regarding insect and rodent invasion should also be considered and a perforated closure should be used to counter these threats where there is the required air gap, whilst still maintaining the required air flow.

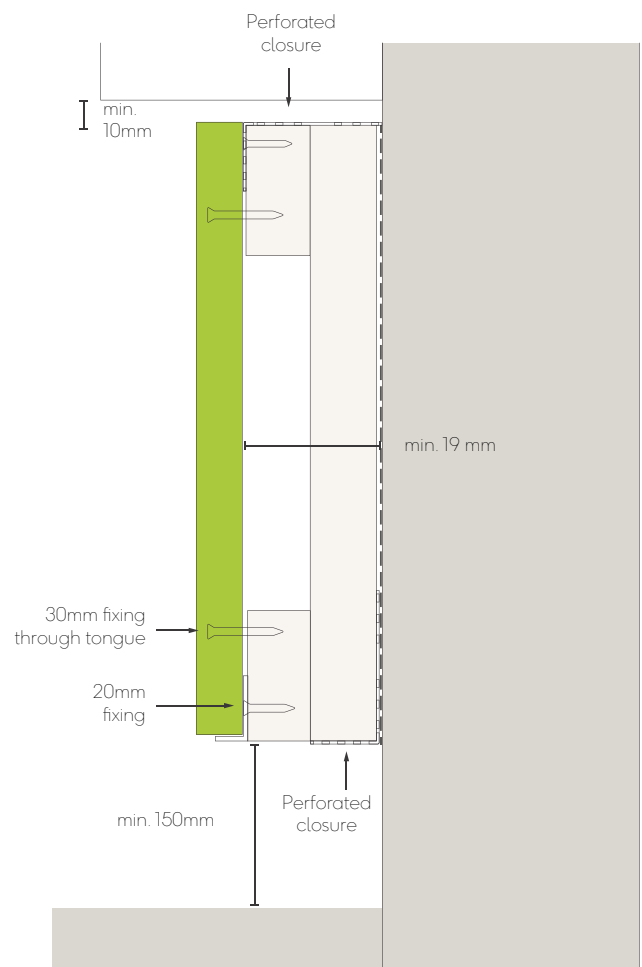


Fig.1 - Top & bottom of cladding detail

Preparation

Cladding support batten

The time and care taken on setting/fixing the support system right will be reflected in the finished result. Time taken to upright corners and straighten battens on undulating walls will make the installation of the cladding a far easier installation and a superior finished result.

Suitable treated timber battens can be used as the battens for the cladding boards, we would recommend putting a strip of DPC, joist tape or EPDM on to the front of the timber battens that the boards will be attached to.

Batten size requirements:

- Main Cladding batten - minimum size of 25x50mm

The maximum support spacing is shown in table 1.

For areas of high wind loading exceeding 1.0kN/m², severe weather exposure or where exceptional impact loading requirements are anticipated (i.e. low-level applications near pedestrian access, schools, leisure facilities etc.) batten support spacing should be reduced to increase the board stiffness, see chart below.

There should always be battens attached to the wall vertically to allow clear ventilation behind the boards, with a vertical cladding installation a further set of horizontal cross-battens would be fixed to these vertical battens to take the boards

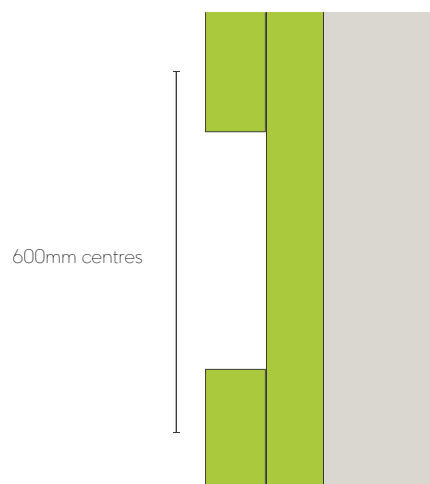


Fig. 2 - Batten centres

Table 1:

Product	Maximum Support Centres	Support Centres for high load areas
Shadow Line ⁺	600mm	400mm

The batten layout around windows/doors/soffits should be that it allows the continuous airflow behind the boards, a 10mm gap should be left between the underside of the windowsills or soffits and at the head of windows/doors (see fig. 3). The battens up the side of the window/doors should be flush with the opening; all vertical battens should be upright.

The perforated closure should be used in all areas where there is an opening to the ventilated cavity, to prevent insects entering the cavity (The perforated closures may need to be turned up at each end of the window/door sill). The Millboard Perforated closure suits batten sizes of 25 or 50mm, if battens different to these sizes are used then perforated closures or flymesh supplied by others should be used.

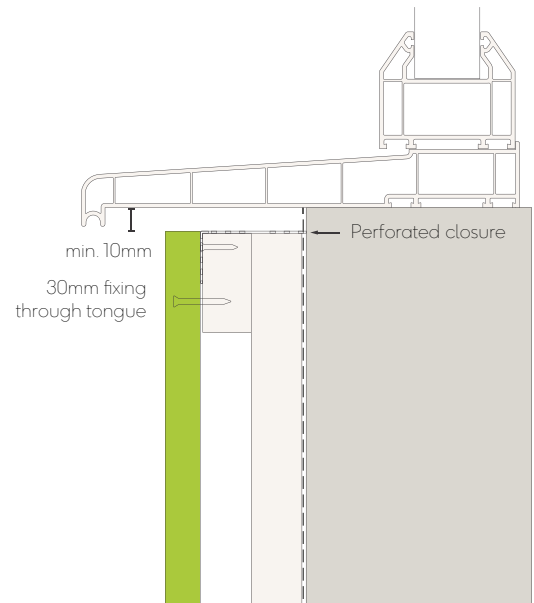


Fig. 3 - Window/door sill detail

It is best for the perforated closure to be held between the back of the battens and the wall. This should be taken in to consideration when fixing the battens, alternatively they can be fixed to the front of the battens using the 20mm Accessories fixings.

Determine at what height the cladding is to start at. If it is starting at ground level, it should start at a minimum of 150mm above finished ground level (see fig. 4), or at least 10mm from decking/free-draining surface (see fig. 5). With a laser line or level, mark up a level line around the building or along the wall that is to be clad. This line will be the bottom of the batten/s.

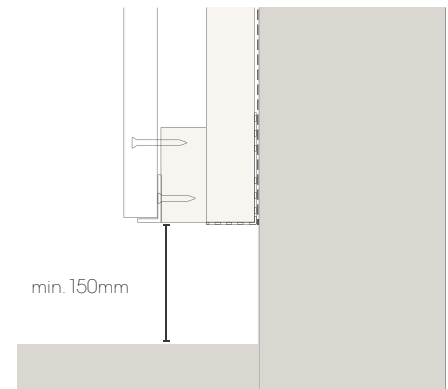


Fig. 4 - Install detail above ground level

Battens should be fixed to the structural wall using suitable external grade fixings, for fixing to a timber frame the battens should preferably be fixed into the timber studs of the frame. The battens should be fixed upright, packers may be needed for these if the wall is undulating.

We would recommend the use of fire ventilated cavity barriers where there are opening into the cavity behind the cladding, including at the bottom and tops of windows & doors.

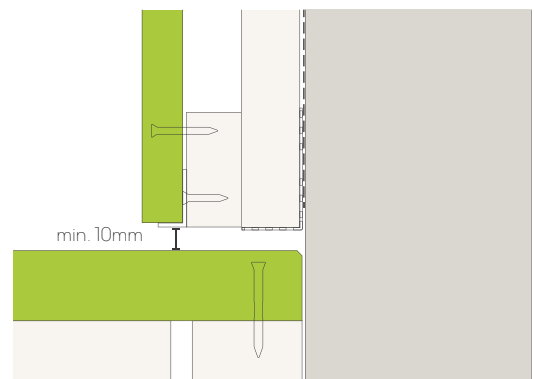


Fig. 5 - Install detail above deck

Installation

Before starting to install the main cladding area, it is important to take into consideration how the corners will be detailed (corners of the building and also corners of openings - windows/doors).

Corners of the building

When using the Shadow Line+ Board the External and Internal Corner Profiles can be used. These allow the boards to butt up to it and hide any potential shrinkage.

If the External Corner profile or Internal Corner profile are being used with the Shadow Line+ boards on the edges of the buildings, these should be fitted first before the starter trims.

The perforated closure is fitted to the back of the External or Internal Corner profile using the 20mm Accessories fixing at 200mm centres, these are then fixed to the battens on the corner. As shown in fig. 6-8.

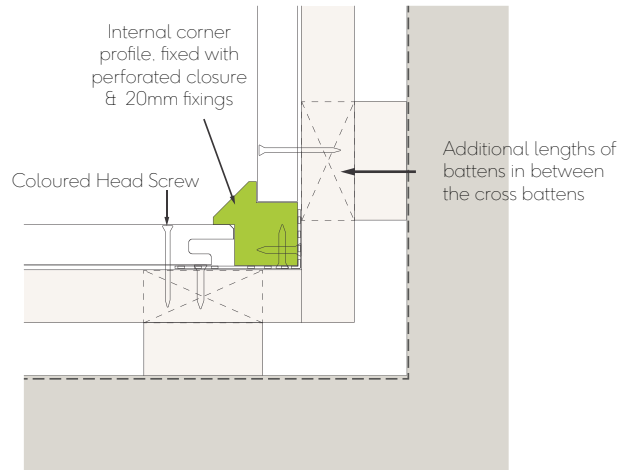


Fig. 7 - Internal corner detail

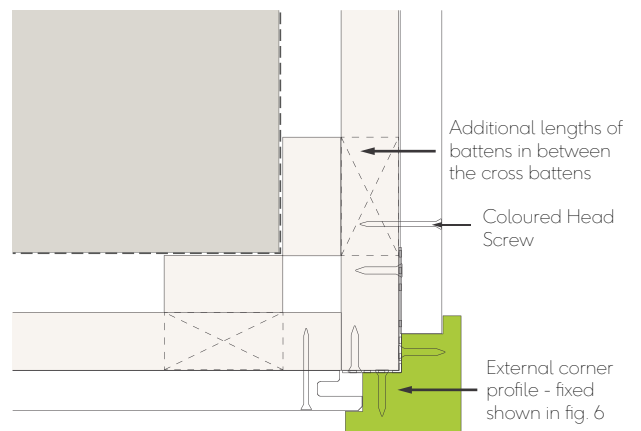


Fig. 8 - External corner detail

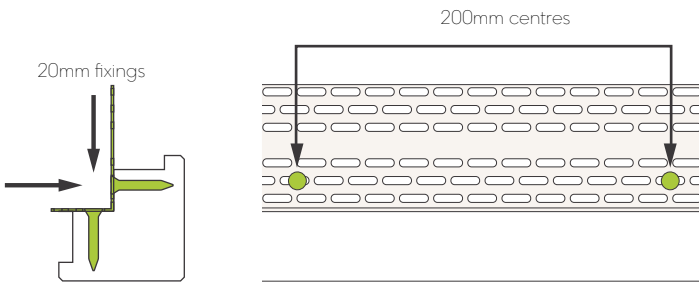


Fig. 6 - Use of perforated closure on corner profiles

When installing Shadow Line+ vertically, short pieces of battens should be installed in front of the vertical battens on the corners in between the cross battens - as shown in the render opposite. This is to offer more support for the corner profile and help provide compartmentalisation behind the cladding.



Alternatively, the boards can be butted together on an internal corner as shown in fig. 9.

The boards can also be mitred to create the external corner, this would also be applicable if the corner is anything other than 90 degrees. (see fig. 10)

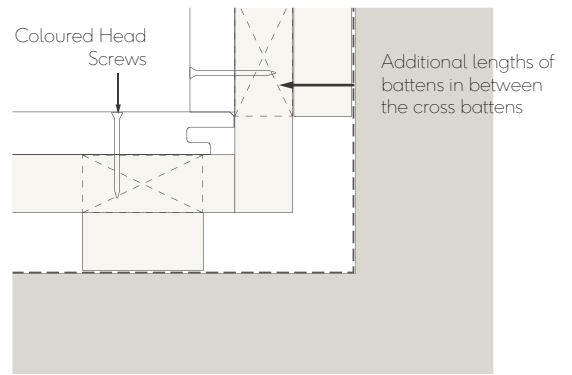


Fig. 9 - Internal butt joint corner detail

Tip for mitre joints:

Mitre and dry fit the boards to make sure the joint fits well, apply polyurethane wood glue to the core of the boards and superglue to the surface layer.

Bring the joint together with the surface layer front edge touching together first, then close the back of the joint and drop into place. If any PU glue bubbles out of the joint, wait until it is semi-dry and remove. Touch-up Coating can be used on any small imperfections on this joint.

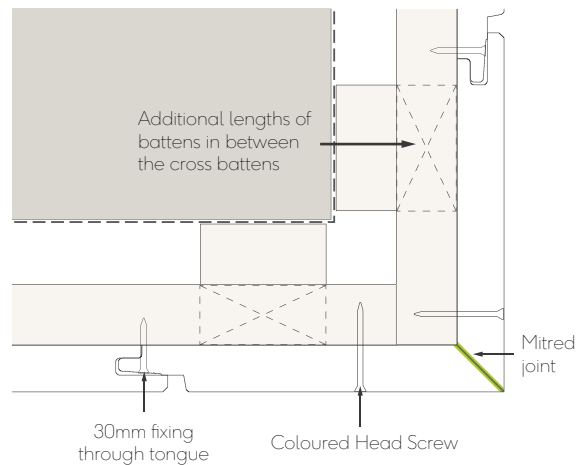
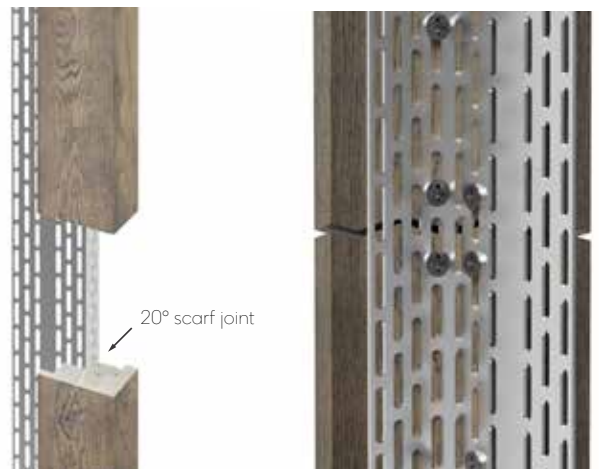


Fig. 10 - External mitred corner detail

Joining Corner Profiles

When joining two Corner Profiles together to make a longer length, these should be joined on a 20 degree scarf joint. They should be joined so that the perforated closure connects both profiles together, dry fit the joint before cutting the profiles to length. The bottom cut should be painted in Touch-up Coating.



Details around windows & doors

Around windows and door openings we would recommend using the Reveal boards to cover the reveals with the cladding boards butted up to the back of them. The Reveal boards will need to be fixed with the Coloured Head Screws fixings through the face. (see fig. 11)

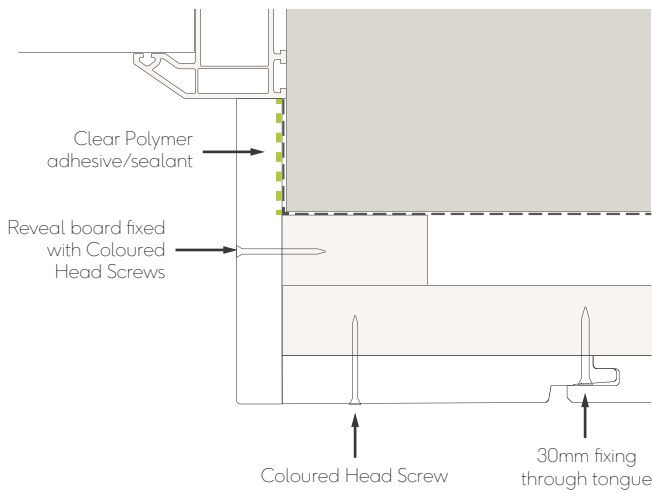


Fig. 11 - Window/door jamb with Reveal board

The back edge of the Reveal boards will need to be painted in Touch-up Coating if they will be visible. (see fig. 12)

We'd recommend putting a clear polymer Adhesive/sealant behind the Reveal or cladding boards that are used around the opening before fixing in place.

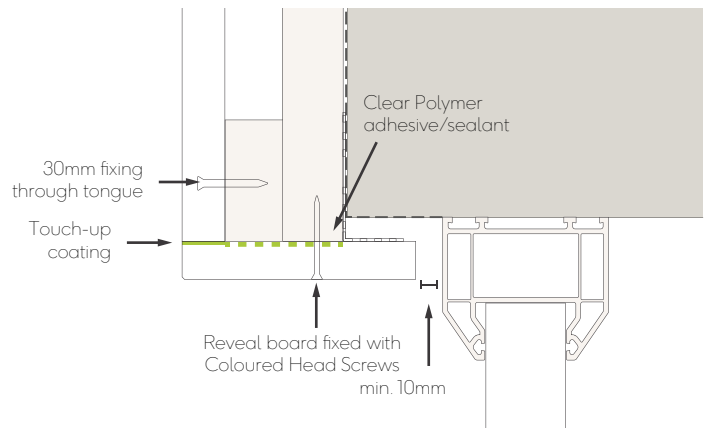


Fig. 12 - Window/door head with Reveal board

Alternatively the Shadow Line+ boards can be mitred and run back into the window reveal shown in fig. 13 & 14.

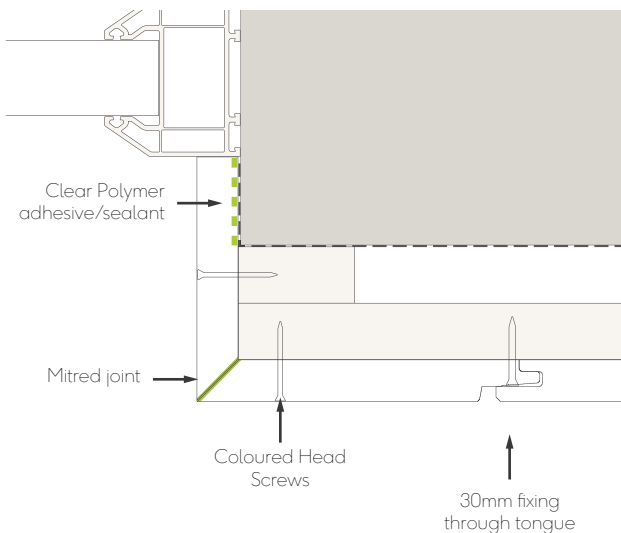


Fig. 13 - Window/door jamb with mitred joint

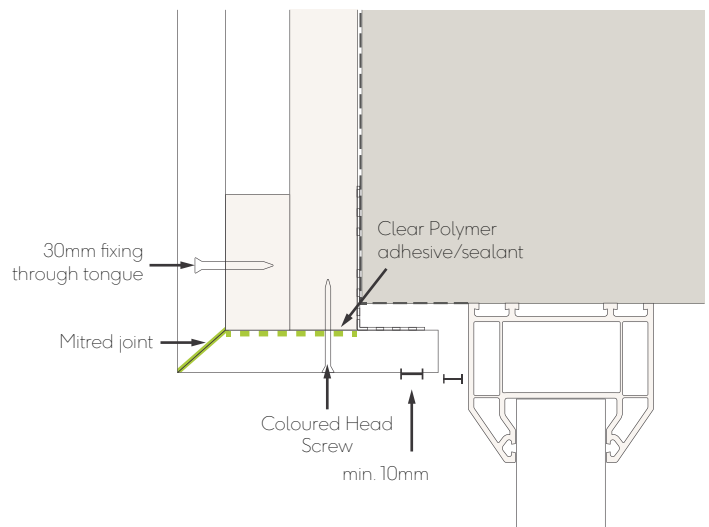


Fig. 14 - Window/door head with mitred joint

Another alternative way to finish off around window/door heads is to cut the boards on a 20 degree angled cut and coat the cut with touch-up. Again, the Reveal board would be used to line the reveals, shown in fig. 15.

Care should be taken not to block the air gap at the top of the reveal and under the sill, leaving a clear 10mm gap.

Any detailing around an opening should allow for airflow to get in to the cavity above the opening.

Please ensure that all windows and doors are sealed sufficiently before installing cladding around them, ensure that the cladding detailing doesn't have a detrimental impact on the performance of the windows/door.

If brad nails are being used through the board face as an alternative to the Coloured Head screws, there needs to be two brads per batten intersection if the cut-down board is more than 50mm wide and the brads put in at angles. Example shown in fig. 16.

When using brads to fix Cladding and reveal boards around window/door openings, we would recommend the use of a clear polymer adhesive/sealant to help secure the products in place. Example shown in fig. 17.

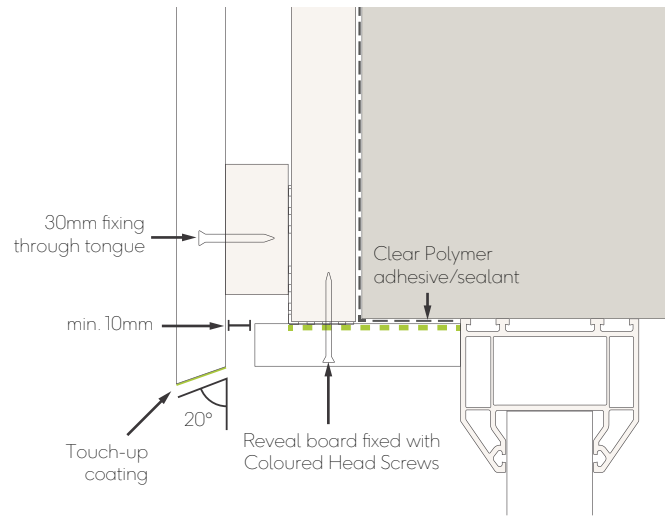


Fig. 15 - Window/door head with angled cut

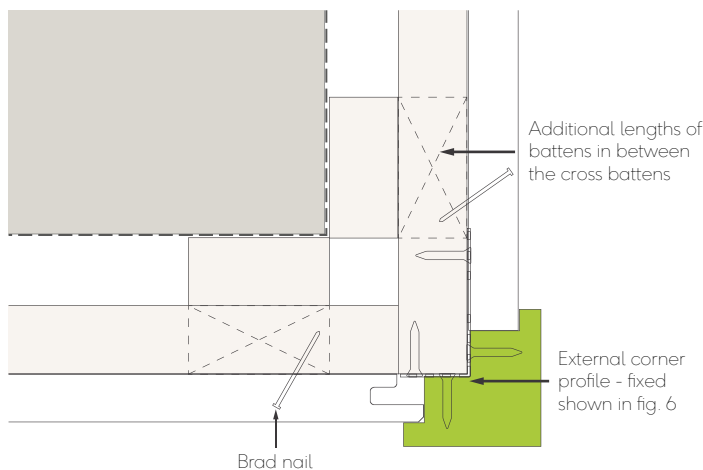


Fig. 16 - External corner detail - brad nails

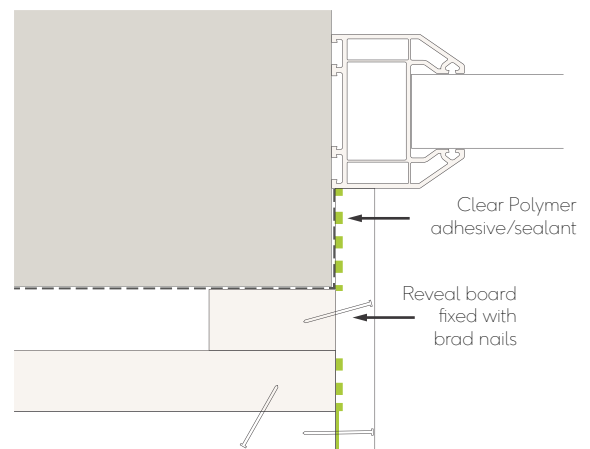


Fig. 17 - Window/door jamb with Reveal board - brad nails

Please note that brads can only be used as an alternative to the coloured head screws and should not be used through the board tongue instead of the 30mm cladding board fixings. A small hole may be left where the brad nail has gone through the board surface.

Installing Starter Trims

The Starter trims will be fitted to the bottom of the battens.

It is important that these trims are installed level so that the boards running off these trims are upright.

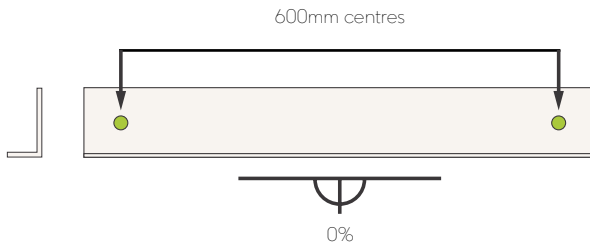


Fig. 18a - Starter trim

These starter trims are fixed to the battens using the 20mm Accessories fixings with the heads countersunk into the trim.

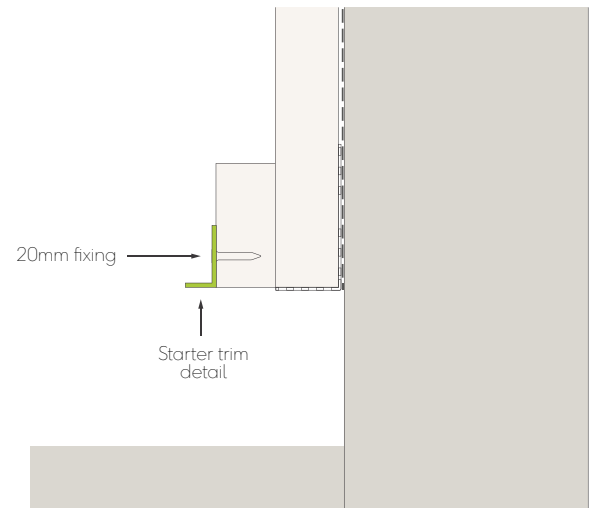


Fig. 18b - Starter trim detail

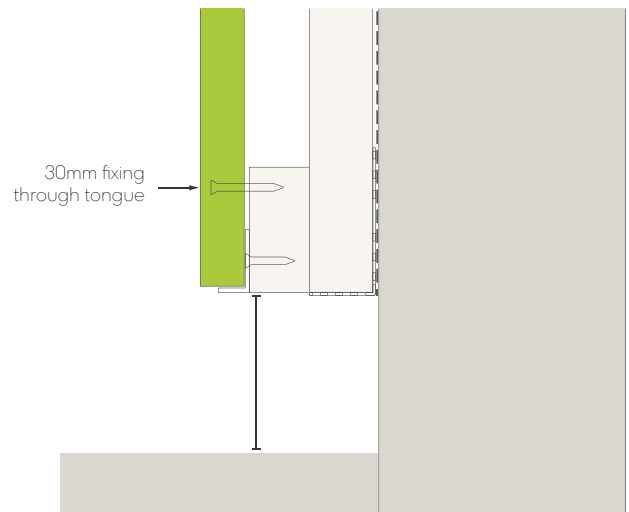


Fig. 19 - First board install

Fixings

The Millboard Envello Cladding boards should be fixed through the tongue with the 3.5x30mm cladding screws, with one fixing per batten intersection and two per batten when joining boards.

The fixings should be inserted through the fixing guide groove on the tongue and angled down slightly, the head should sit flush with the surface.

The fixings do not need to be predrilled or countersunk, the boards will allow the head to countersink slightly.



Once the first row of boards have been installed, the second row of boards can be installed beside it, with the groove covering the tongue of the previous board.

Check the boards against a level every 4/5th board to ensure that the boards are keeping upright, adjust the spacing between the following boards accordingly if needed.

Spacers may be needed in between the boards during installation to keep the boards running level. The Millboard Multi-Spacers can be used to keep a uniform 5/6mm shadow gap between the boards.

When the tongue is taken off the boards to fit around windows/doors, or up to the soffit, the 40mm Coloured Head Screws or brad nails will need to be used through the board face. Shown in fig. 11-17

Joining boards

When joining boards end-to-end, this should be done where there is a batten behind, so both ends are supported by a batten. It is best to not have the joins all in one line, so that they are spread out across the cladding area.

As the boards are manufactured through a moulding process we recommend that all ends are cut before they're installed. Dry fit the boards first to make sure they align, using boards that are of appropriate dimensions to ensure a consistent finish.

We recommend that the boards are joined with a 20 degree scarf joint with one overlapping the other, the front face of the cut should be painted in Touch-up Coating, shown in fig. 20.

As Millboard is made from a resin mineral composition it is stable in comparison to timber or composites based on timber, the amount of movement that is acceptable is up to 0.2%.

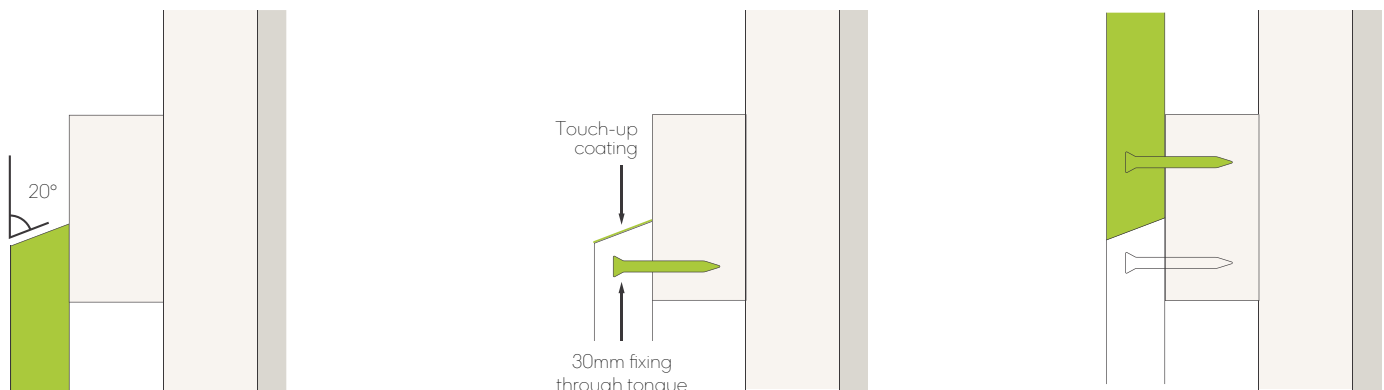


Fig. 20 - Joining boards detail

Installation Abutting Render

The junction between Envello and render can be done in a number of different ways, however we'd recommend doing the rendering first before fitting the Envello and finishing the render up to a render stop bead rather than directly up to the cladding.

Please ensure that you leave a 3-4mm gap between the render stop and the edge of the cladding/corner profiles.

When running the Shadow Line+ boards up to render on a wall, the boards can be butted up to the render stop-bead (see fig. 21).

The junction between the Shadow Line+ boards and render on a corner can be done utilising the Envello Corner profiles or Reveal boards as shown in fig. 22.

When installing cladding above render, it is best to install a flashing detail which goes up behind the cladding battens and protrudes further than the render. This is to allow rain water to drip off the flashing detail (see fig. 23)

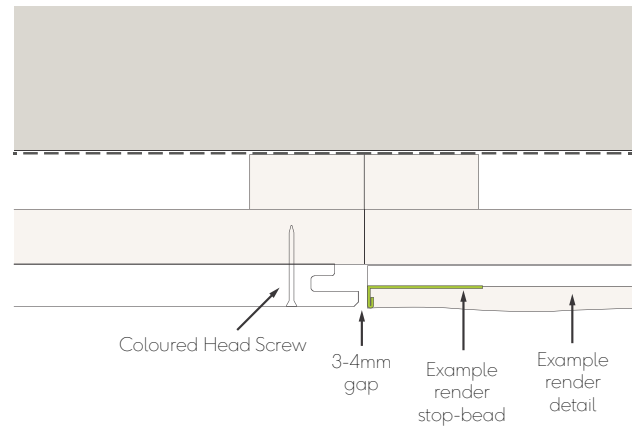


Fig. 21 - Corner profile butting up to render

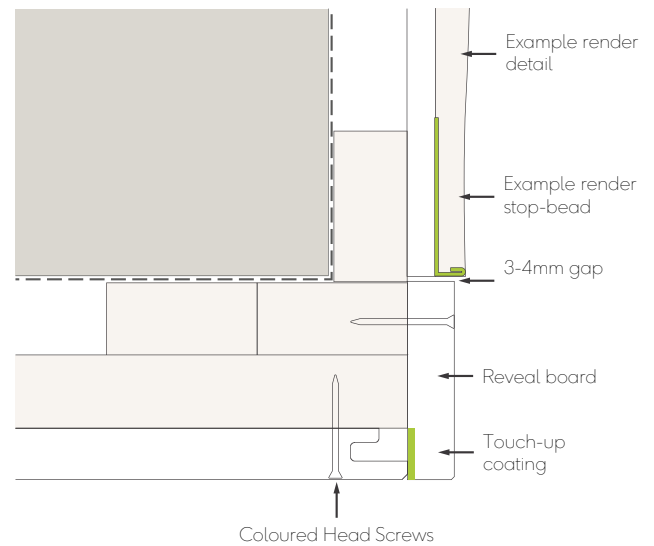


Fig. 22 - Corner profile butting up to render on external corner

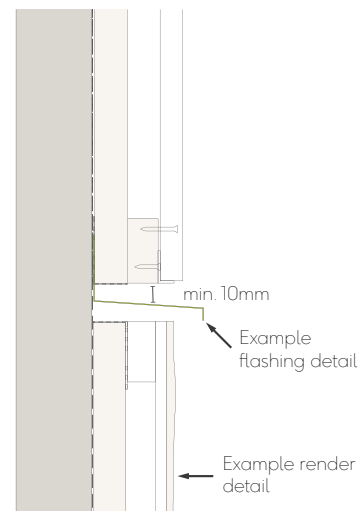


Fig. 23 - Installing cladding above render

After care

Cleaning

When installing the boards as part of a wider project, we would strongly recommend they are stored away from cement dust or potential debris to minimise lasting damage or marking.

Please ensure the boards are stored/kept away from cement dust or potential debris part of a wider project

If the boards become dirty during installation, they should be cleaned as soon as possible using warm soapy water and a brush or pressure washer.

Start cleaning at the top of the cladding and work downwards along the grain. It is best to use a brush with an extendable handle to clean the boards.

Pressure washers can be used on Millboard Envello Cladding, with a PSI of no greater than 2000. A fan tip should be used with a 40 to 60 degree spread, keeping the head 250-300mm away from the surface. Test in an inconspicuous area first - direct, prolonged contact could damage the surface of the boards.

Take extra care when using a pressure washer around windows, doors and cut ends of boards.

Stubborn marks may be removed with a range of different cleaners depending on the mark.

If you have any queries or concerns regarding your Millboard cladding, please email us at technical@millboard.co.uk, or call

our UK support team on 024 7643 9943.



Live. Life. Outside.



The Millboard Company Ltd
UK Head Office
Unit A, Castle Court
Bodmin Road
Coventry CV2 5DB

T: +44 (0) 24 7643 9943
E: enquiries@millboard.co.uk

millboard.co.uk



Company registered No. 06061318
VAT No: 980 616602

© 2023 The Millboard Company Ltd. Millboard®, Lastane®, Durafix®, Lasta-Grip®, DuoSpan®, Envello® and the phrase "Live. Life. Outside.™" are protected trademarks. Patents and Patents Pending apply to Millboard® products. The company will vigorously defend its patent rights. Due to printing restraints, actual colours may vary from those shown in brochure. This brochure is not to be reproduced or copied without written permission from Millboard directors. Millboard has a policy of continual improvement to specification. Product blend, colours and sizes may change without notice. All sizes and measurements are nominal. Information is correct at time of going to press. Patent numbers include GB 2445714, GB 2449184, USA 8,065,849, CAN 2664329, EU 1951971.